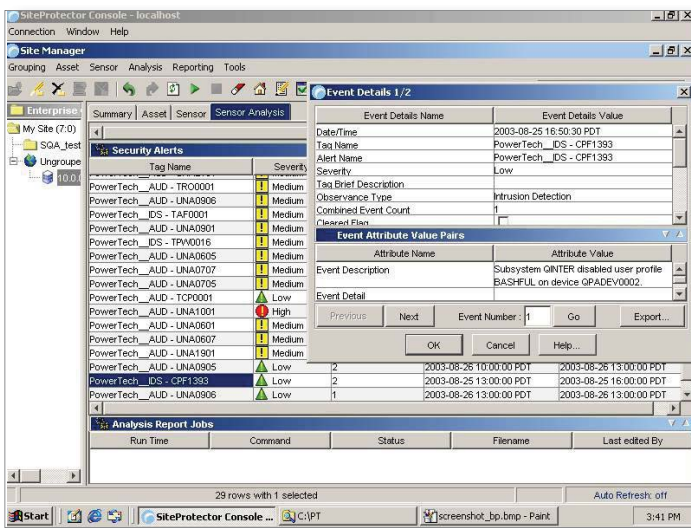


# PowerTech Interact

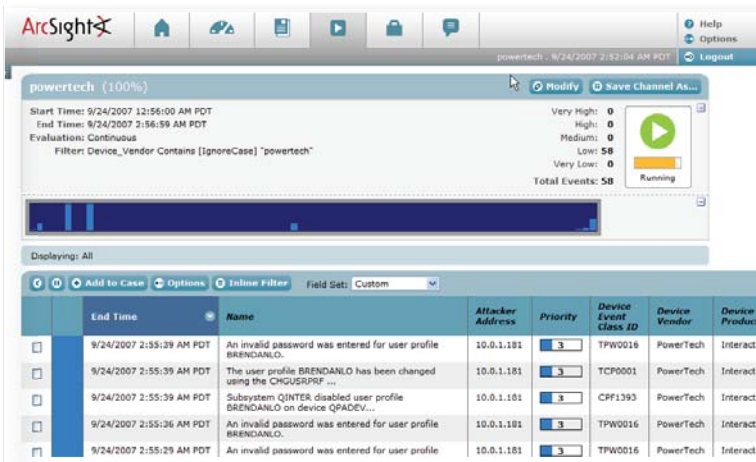
## Real Time Security Events from AS/400



IBM AS/400 events in the ISS Site Protector Intrusion Detection console.

IT infrastructure consists of a complex network of firewalls, servers, applications and security devices. Among these, the IBM System i™ platform (formerly known as AS/400) typically houses the most business critical data in an organization. As companies broaden their focus from perimeter security to insider threats and regulatory compliance, the AS/400 needs to be monitored as diligently as other nodes in the network.

The leading AS/400 security company, PowerTech, sends security events in real time to Security Information Management (SIM) or Intrusion Detection Systems (IDS) solutions. PowerTech Interact gathers security events from the audit journal, operating system, and network, and forwards them in real time via syslog to third party solutions, where they can be correlated and managed with events from many different sources. Users don't have to worry about configuring batch ftp file transfers or the complexity of language settings.



IBM AS/400 events in the ArcSight Security Information Management (SIM) console.



**Interact at a glance:**

FEATURE	BENEFIT
Monitors over 500 different events from the iSeries and sends in real time to Syslog.	Integrate with Security Information Management (SIM) solutions and identify breaches in real time
Monitors events from the System i audit journal (QAUDJRN)	Examples are changes to user profiles and system values; invalid login attempts; objects that are changed, deleted, moved; intrusions detected etc.
Includes all allowed and rejected transactions from PowerTech Network Security	Monitor network access to the server through ftp, ODBC, and Remote Command
Captures and sends Critical Operating System messages from QSYSOPR or QSYSMSG	Monitor critical events, such as "Critical storage threshold reached" or "Profile disabled due to invalid logins"
Filter events by user, IP address, day, and time and assign a criticality	Customize the information and reduce volume of events sent to remote console
Complex audit journal details are parsed to extract key information into a readable format.	Operators don't have to be AS/400 experts to read the data.

**About the PowerTech Group, Inc.**

PowerTech is your security expert in managing evolving compliance and data privacy threats with automated security solutions for IBM Midrange Servers. Because iSeries and AS400 servers are used to host particularly sensitive corporate data, it is imperative that you practice proactive compliance security. As an IBM Advanced Business Partner with over 800 customers worldwide, PowerTech understands corporate vulnerability and the risks associated with data privacy and access control.

Seattle, WA-based PowerTech Group was founded by security experts in 1996.

To learn more, please visit [www.powertech.com](http://www.powertech.com), to find white papers, case studies and detailed product specifications, or call 800-915-7700 to speak to a security solutions specialist.

